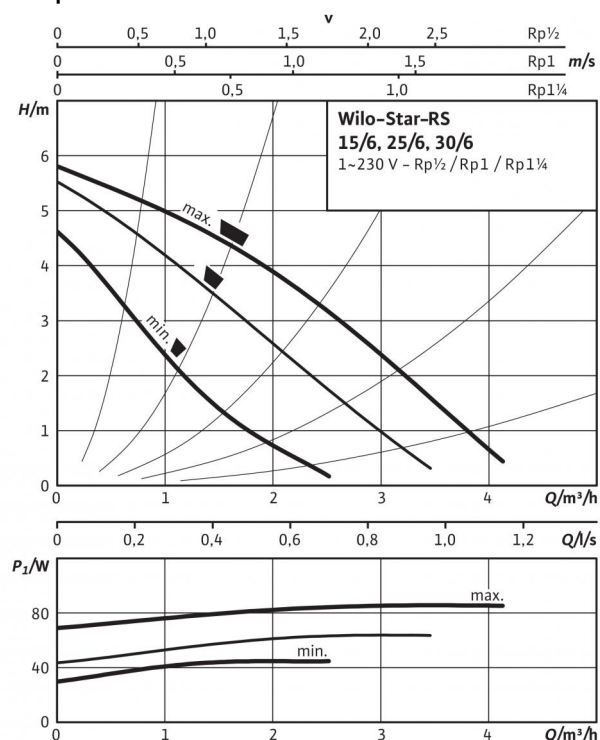
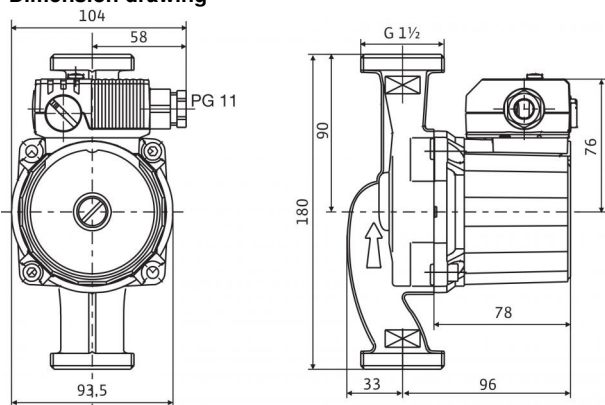


Data sheet: Star-RS 25/6

Pump curves

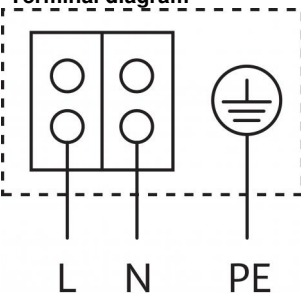


Dimension drawing



Motor horizontal
Terminal box positions for 3, 6, 9 and 12 o'clock possible

Terminal diagram



Blocking current-proof motor
Single-phase motor (EM) 2-pole - 1~230 V, 50 Hz
With built-in capacitor

Approved fluids (other fluids on request)

Heating water (in accordance with VDI 2035)
Water-glycol mixtures (max. 1:1; above 20% admixture, the pumping data must be checked)

Permitted field of application

Temperature range at max. ambient temperature +40 °C
Maximum permissible operating pressure P_{max}

Pipe connections

Threaded pipe union
Thread
Overall length L_0

Motor/electronics

Electromagnetic compatibility

Emitted interference

Interference resistance

Speed control

Protection class

Insulation class

Mains connection

Speed n

Power consumption P_1

Current consumption I

Motor protection

Threaded cable connection PG

Materials

Pump housing

Impeller

Pump shaft

Bearing

Minimum suction head at suction port for avoiding cavitation at water pumping temperature

Minimum suction head at 50 / 95 / 110 °C

Information for order placements

Make

Art no.

Type

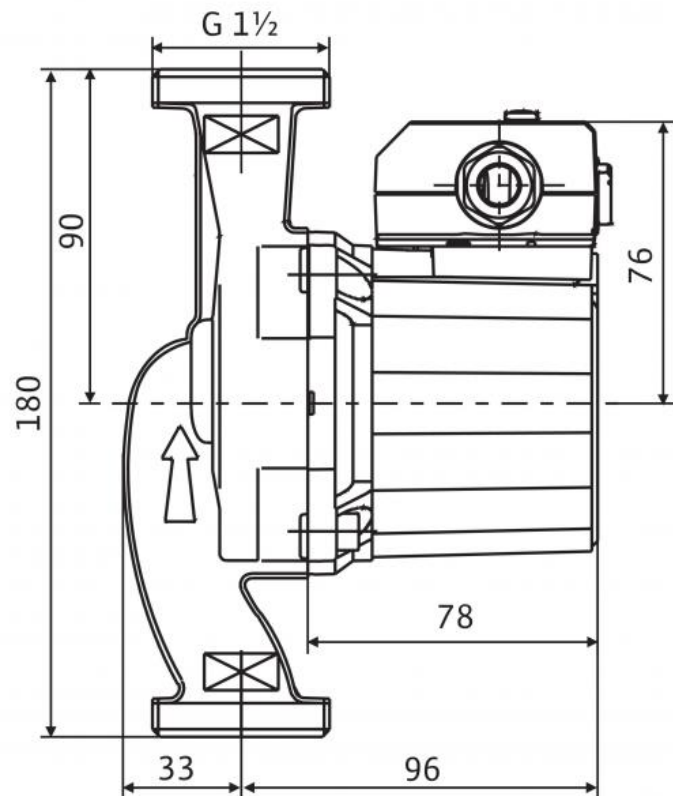
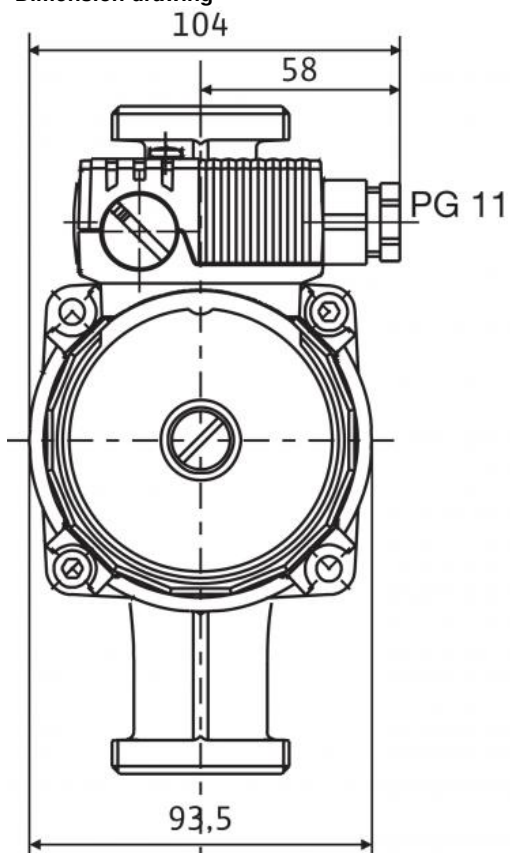
Weight approx. m

Version ...RG with pump housing made of red brass

Version ...L with connection for quick aspirator

Dimensions and dimensions drawings: Star-RS 25/6

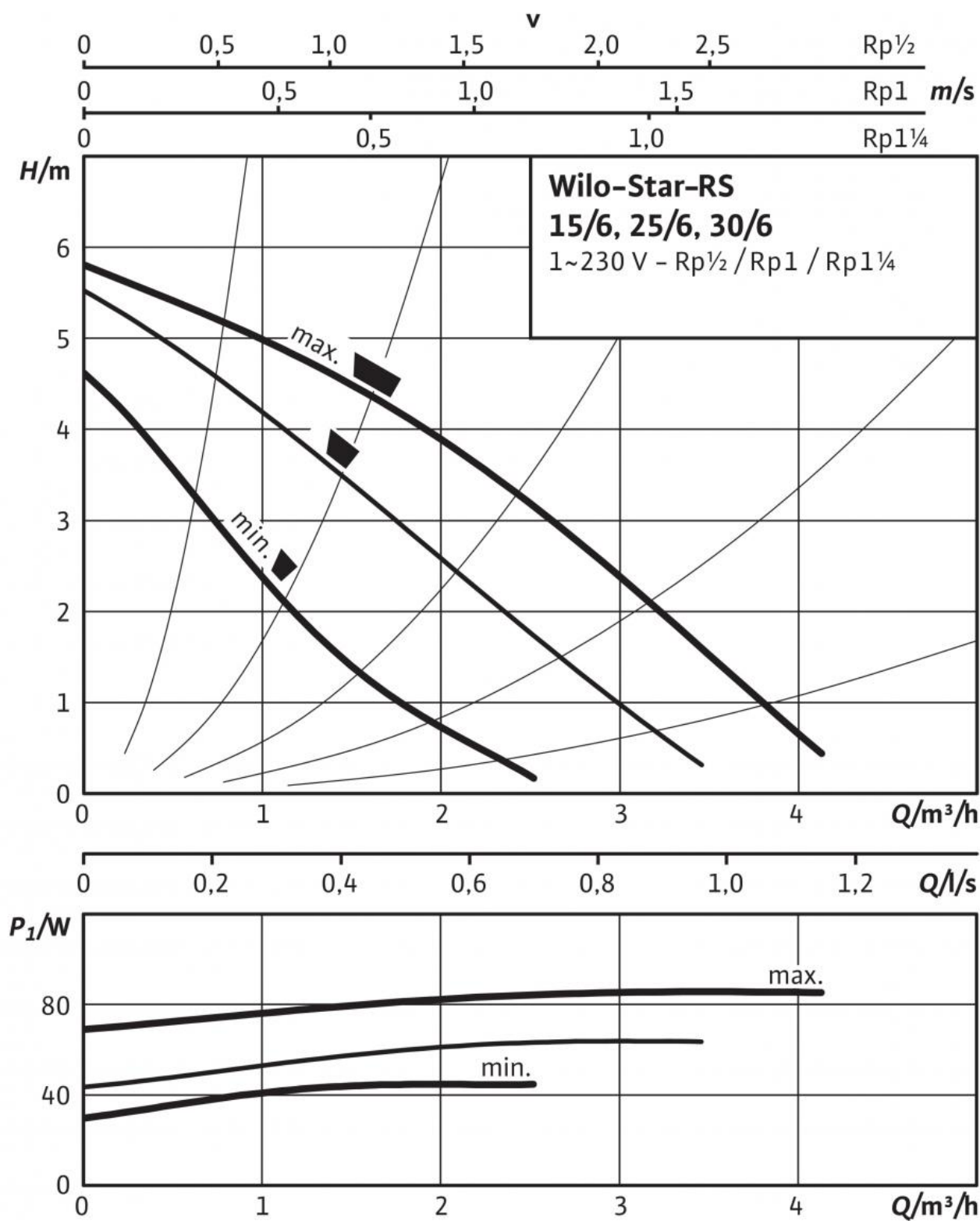
Dimension drawing



Motor horizontal
Terminal box positions for 3, 6, 9 and 12 o'clock possible

Pump curves: Star-RS 25/6

Pump curves



Ordering information: Star-RS 25/6

Make	Wilo
Type	Star-RS 25/6
Art no.	4032956
EAN number	4016322364245
Colour	Green
Minimum order quantity	1
Minimum order quantity unit	PCE
Weight (net) <i>kg</i>	2.6
Length (net) <i>mm</i>	130
Width (net) <i>mm</i>	180
Height (net) <i>mm</i>	104
Weight (gross) <i>kg</i>	2.7
Length (gross) <i>mm</i>	152
Width (gross) <i>mm</i>	188
Height (gross) <i>mm</i>	104
Packaging type	Cardboard box
Packaging property	Sales packaging
Pieces per pallet	256
Number per layer	32

Tender text: Star-RS 25/6

Glandless circulation pump for pipe installation with manual 3-stage speed switch.

With blocking-current proof motor. Pump housing made from cast iron (bronze depending on type), impeller made from glass reinforced plastic, stainless steel shaft with metal-impregnated carbon plain bearings. Used as standard in cold-water systems up to -10 °C.

Operational safety thanks to drilled-through shaft and filter unit in front of the cartridge

Approved fluids (other fluids on request)

Max. volume flow Q_{\max} : 4 m³/h

Max. delivery head H_{\max} : 6 m

Permitted field of application

Temperature range at max. ambient temperature +40 °C: -10...+110 °C

Maximum permissible operating pressure P_{\max} : 10 bar

Pipe connections

Threaded pipe union: Rp 1

Overall length L_0 : 180 mm

Motor/electronics

Electromagnetic compatibility: EN 61800-3

Emitted interference: EN 61000-6-3

Interference resistance: EN 61000-6-2

Speed control: -

Protection class: IP 44

Insulation class: F

Mains connection: 1~230 V, 50 Hz

Speed n : 2480 / 2750 / 2840 rpm

Rated power P_2 : 38 W

Power consumption 1~230 V P_1 : 43 / 61 / 84 W

Current at 1~230 V I : 0.20 / 0.28 / 0.36 A

Max. current I : 0.36 A

Motor protection: Not required (blocking-current proof)

Threaded cable connection PG : 1x11

Materials

Pump housing: Grey cast iron (EN-GJL-200)

Impeller: Plastic (PP - 40% GF)

Pump shaft: Stainless steel (X40Cr13)

Bearing: Carbon, metal impregnated

Minimum suction head at suction port for avoiding cavitation at water pumping temperature

Minimum suction head at 50 °C: 0.4999974 m

Minimum suction head at 95 °C: 2.999995 m

Minimum suction head at 110 °C: 10 m

Minimum suction head at 130 °C H : 0 m

Information for order placements

Art no.: 4032956

EAN number: 4016322364245

Weight approx. m : 2.7 kg

Make: Wilo

Designation: Wilo-Star-RS 25/6